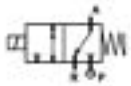


3/2 WAY DIRECT ACTING SOLENOID VALVE, G 1/8" - G 1/4"



normally closed

TYPE: D362/363

TECHNICAL SPECIFICATIONS

Media:	water, oil, air
Media temperature:	-10°C ÷ +130°C
Ambient temperature:	-10°C ÷ +50°C
Body material:	brass (CW617N EN 12165)
Orifice material:	stainless steel (AISI 303 EN 10088-3)
Operator material:	stainless steel
Seal material:	FKM
Coil power:	AC 18VA (holding) AC 36VA (inrush) DC 14W
Protection class:	IP 65 (with connector)

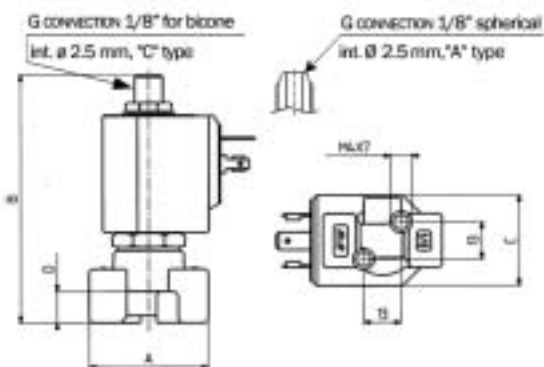


OPTIONS

Normally open (Ex. code <u>RD362CVC</u>) with coils class "H" only
Manual override (Ex. code <u>D362CVGM</u>)
EPDM seal for air and hot water MAX 120°C (Ex. code <u>D362CEC</u>)
RUBY seal -10°C+180°C for high temperature with class "H" coils (Ex. code <u>D363ARE 7201</u>)
Armature tube with G connection 1/8" spherical (Ex. code <u>D362AVC</u>)

SELECTION TABLE	VALVE	G connection	Nominal Diameter	Flow rate kvs	OPD			COILS	
	Code	[ISO 228]	[mm]	[l/min]	min [bar]	max AC [bar]	max DC [bar]	Code	[Volts/Hz]
	D362CVC	1/8"	1.5	1.3	0	18	18	7250	24V DC
	D362CVE	1/8"	2.0	2.2	0	10	10	7200	24V 50/60Hz
	D362CVG	1/8"	2.5	3.4	0	7	7	7400	110V 50Hz - 120V 60Hz
	D363CVC	1/4"	1.5	1.3	0	18	18	7600	200V 50Hz - 220V 60Hz
	D363CVE	1/4"	2.0	2.2	0	10	10	7700	230V 50Hz - 240V 60Hz
	D363CVG	1/4"	2.5	3.4	0	7	7		
	D363CVH	1/4"	3.0	4.5	0	5	5		
	D363CVL*	1/4"	4.0	6.0	0	3.5	3.5		
D363CVN*	1/4"	5.0	7.5	0	2.5	2.5			
D363CVP*	1/4"	6.0	8.5	0	1.5	1.5			

* NO version not available



DIMENSIONS & WEIGHTS	G connection	A	B	C	D	weight
	[ISO 228]	[mm]	[mm]	[mm]	[mm]	[Kg]
	1/8"	40	87	32	11	0.25
1/4"	40	87	32	11	0.25	

Flow direction underseat 2→1