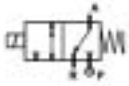


## 3/2 WAY DIRECT ACTING SOLENOID VALVE, FLANGE 32X32



normally closed

TYPE: D301

### TECHNICAL SPECIFICATIONS

Media:	water, oil, air
Media temperature:	-10°C ÷ +130°C
Ambient temperature:	-10°C ÷ +50°C
Body material:	brass (CW617N EN 12165)
Orifice material:	stainless steel (AISI 303 EN 10088-3)
Operator material:	stainless steel
Seal material:	FKM
Coil power:	AC 18VA (holding) AC 36VA (inrush) DC 14W
Protection class:	IP 65 (with connector)

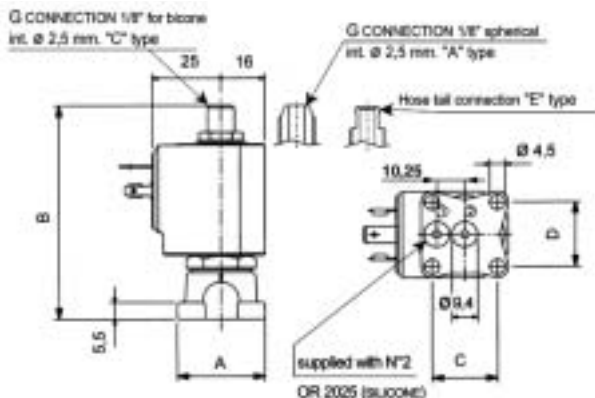


### OPTIONS

- Normally open (Ex. code RD301CVG) with coils class "H" only
- Manual override (Ex. code D301AVCM)
- EPDM seal for air and hot water MAX 120°C (Ex. code D301CEC)
- RUBY seal -10°C +180°C for high temperature with class "H" coils (Ex. code D301ARB 7201)
- Armature tube with G connection 1/8" spherical (Ex. code D301AVC)
- Armature tube with hose tail ø 6 mm (Ex. code D301EVE)

### SELECTION TABLE

VALVE	Square base	Nominal Diameter	Flow rate kvs	OPD			COILS		
				min	max	AC [bar]	DC [bar]	Code	[Volts/Hz]
Code	[ISO 228]	[mm]	[l/min]	[bar]					
D301CVC	32x32	1.5	1.3	0		18	18	7250	24V DC
D301CVE	32x32	2.0	2.2	0		10	10	7200	24V 50/60Hz
D301CVG	32x32	2.5	3.4	0		7	7	7400	110V 50Hz - 120V 60Hz
								7600	200V 50Hz - 220V 60Hz
								7700	230V 50Hz - 240V 60Hz



### DIMENSIONS & WEIGHTS

square base	A	B	C	D	weight
[mm]	[mm]	[mm]	[mm]	[mm]	[Kg]
32x32	32	77	24	24	0.25