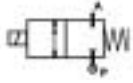


## 2/2 WAY DIRECT ACTING SOLENOID VALVE, G 1/8" - G 1/4"



normally closed

TYPE: D298/299

### TECHNICAL SPECIFICATIONS

Media:	water, oil, air, aggressive fluids
Media temperature:	-10°C ÷ +130°C
Ambient temperature:	-10°C ÷ +50°C
Body material:	stainless steel (AISI 303 EN 10088-3)
Orifice material:	stainless steel (AISI 303 EN 10088-3)
Operator material:	stainless steel
Seal material:	FKM
Coil power:	AC 18VA (holding) AC 36VA (inrush) DC 14W
Protection class:	IP 65 (with connector)



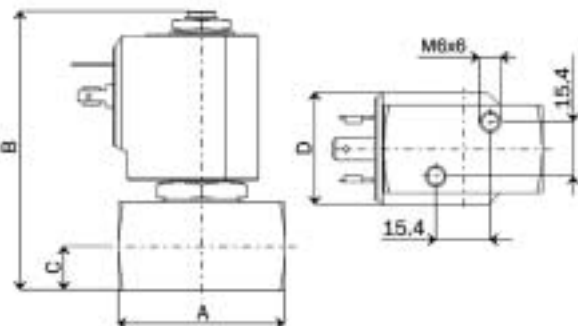
### OPTIONS

Normally open (Ex. code <u>RD298DVG</u> ) with coils class "H" only
Silver shading ring (Ex. code <u>D298DVCA</u> )
EPDM seal for air and hot water MAX 120°C (Ex. code <u>D299DEG</u> )

### SELECTION TABLE

VALVE	G connection	Nominal Diameter	Flow rate kvs	OPD			COILS	
				min	max		Code	[Volts/Hz]
Code	[ISO 228]	[mm]	[l/min]	[bar]	AC [bar]	DC [bar]	Code	[Volts/Hz]
D298DVC	1/8"	1.5	1.3	0	24	24	7250	24V DC
D298DVG	1/8"	2.5	3.4	0	18	16	7200	24V 50/60Hz
D298DVH	1/8"	3.0	4.5	0	15	8	7400	110V 50Hz - 120V 60Hz
D299DVC	1/4"	1.5	1.3	0	24	24	7600	200V 50Hz - 220V 60Hz
D299DVG	1/4"	2.5	3.4	0	18	16	7700	230V 50Hz - 240V 60Hz
D299DVH	1/4"	3.0	4.5	0	15	8		
D299DVL*	1/4"	4.0	6.0	0	8	5		
D299DVN*	1/4"	5.0	7.5	0	5	2		

\* NO version not available



### DIMENSIONS & WEIGHTS

G connection	A	B	C	D	weight
[ISO 228]	[mm]	[mm]	[mm]	[mm]	[Kg]
1/8"	44	78.5	12.5	32	0.36
1/4"	44	78.5	12.5	32	0.36