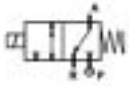


3/2 WAY DIRECT ACTING SOLENOID VALVE, G 1/8"



normally closed

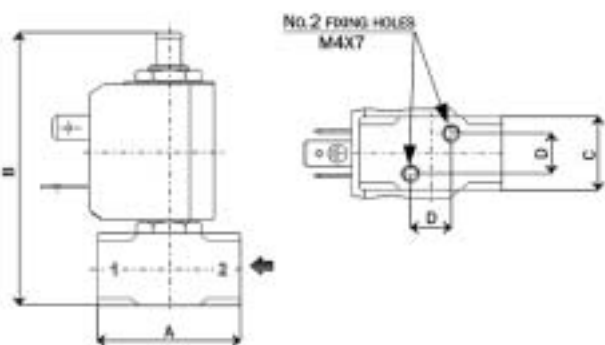
TYPE: B398

TECHNICAL SPECIFICATIONS

Media: water, oil, air, aggressive fluids
Media temperature: -10°C ÷ +130°C
Ambient temperature: -10°C ÷ +50°C
Body material: stainless steel (AISI 303 EN 10088-3)
Orifice material: stainless steel (AISI 303 EN 10088-3)
Operator material: stainless steel
Seal material: foodgrade FKM A80
Coil power: AC 10VA (holding)
AC 16VA (inrush)
DC 7W
Protection class: IP 65 (with connector)



SELECTION TABLE	VALVE		G connection	Nominal Diameter	Flow rate kvs	OPD		COILS	
	Code	[ISO 228]	[mm]	[l/min]	min	max	Code	[Volts/Hz]	
					[bar]	AC [bar]	DC [bar]		
	B398EV2	1/8"	1.2	0.7	0	15	15	2250	24V DC
	B398EV3	1/8"	1.5	1.0	0	10	10	2200	24V 50/60Hz
	B398EV5	1/8"	2.0	1.9	0	5	5	2400	110V 50Hz - 120V 60Hz
	B398EV7	1/8"	2.5	2.7	0	3	3	2600	200V 50Hz - 220V 60Hz
								2700	230V 50Hz - 240V 60Hz



DIMENSIONS & WEIGHTS	G connection	A	B	C	D	weight
	[ISO 228]	[mm]	[mm]	[mm]	[mm]	[Kg]
	1/8"	35	68	18	10	0.1