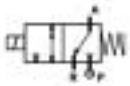


3/2 WAY DIRECT ACTING SOLENOID VALVE, G 1/8"



normally closed

TYPE: B397

TECHNICAL SPECIFICATIONS

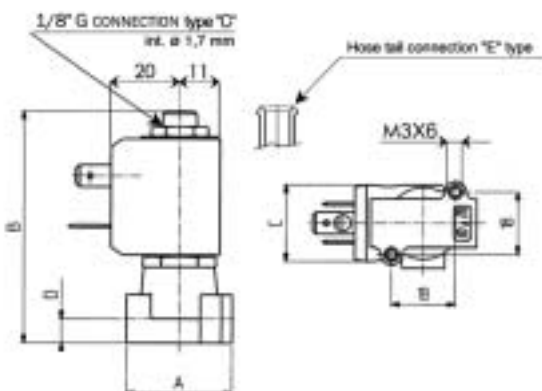
Media:	water, oil, air
Media temperature:	-10°C ÷ +130°C
Ambient temperature:	-10°C ÷ +50°C
Body material:	brass (CW719R EN 12165) low lead content
Orifice material:	stainless steel (AISI 303 EN 10088-3)
Operator material:	stainless steel
Seal material:	foodgrade FKM A80
Coil power:	AC 10VA (holding) AC 16VA (inrush) DC 7W
Protection class:	IP 65 (with connector)

OPTIONS

Normally open (Ex. code <u>RB397C</u> <u>VE</u>)
Manual override (Ex. code <u>B397C</u> <u>VBM</u>)
EPDM seal for air and hot water MAX 120°C (Ex. code <u>B397C</u> <u>EC</u>)
Armature tube with hose tail Ø 6 mm (Ex. code <u>B397</u> <u>EVE</u>)
Electroless nickel plating treatment (Ex. code <u>B397C</u> <u>VCK</u>)



SELECTION TABLE	VALVE	G connection	Nominal Diameter	Flow rate kvs	OPD			COILS	
					min	max	max	Code	[Volts/Hz]
	Code	[ISO 228]	[mm]	[l/min]	[bar]	AC [bar]	DC [bar]		
	B397CVA	1/8"	1.0	0.5	0	18	18	2250	24V DC
	B397CVB	1/8"	1.2	0.7	0	15	15	2200	24V 50/60Hz
	B397CVC	1/8"	1.5	1.0	0	10	10	2400	110V 50Hz - 120V 60Hz
	B397CVE	1/8"	2.0	1.9	0	5	5	2600	200V 50Hz - 220V 60Hz
	B397CVH	1/8"	3.0	3.5	0	2	2	2700	230V 50Hz - 240V 60Hz



DIMENSIONS & WEIGHTS	G connection	A	B	C	D	weight
	[ISO 228]	[mm]	[mm]	[mm]	[mm]	[Kg]
	1/8"	30	67	22	7	0.15

Flow direction underseat 2→1